

CUSTOMER: \_\_\_\_\_

JOB NAME: \_\_\_\_\_

PO #: \_\_\_\_\_ QUOTE # \_\_\_\_\_

DATE: \_\_\_\_\_ QUANTITY: L \_\_\_\_\_ R \_\_\_\_\_

SHIP TO: \_\_\_\_\_

One Signature Required

\_\_\_\_\_/\_\_\_\_\_/\_\_\_\_\_  
PLUMBING CONTRACTOR APPROVAL DATE

\_\_\_\_\_/\_\_\_\_\_/\_\_\_\_\_  
GENERAL CONTRACTOR APPROVAL DATE

\_\_\_\_\_/\_\_\_\_\_/\_\_\_\_\_  
ENGINEER APPROVAL DATE

\_\_\_\_\_/\_\_\_\_\_/\_\_\_\_\_  
ARCHITECT APPROVAL DATE

To complete your order, this document must be signed and emailed to the Centralized Customer Service Center.  
**quotes@americanbathgroup.com • 800.443.7269**

**STANDARD FEATURES**

- Pre-leveled base
- AcrylX™ applied acrylic surface
- 1/2" skirt
- 1/2" COL exterior threshold
- Compliant when properly installed
- Center front drain outlet
- Integral front trench drain
- 12" x 24" subway tile
- Slip resistant, textured bottom [ASTM F-462]

Int. Dim.	60 W x 36 D x 76 3/4 H
Ext. Dim.	66 W x 38 1/8 D x 78 3/4 H
Skirt Ht.	1/2 skirt, 1/2 COL exterior threshold
Packaged Wt.	210 lbs.
Material	AcrylX™ applied acrylic
Warranty	30-year warranty*

\* See terms and conditions for details

inches

**CONFIGURATION (handed by the seat)**

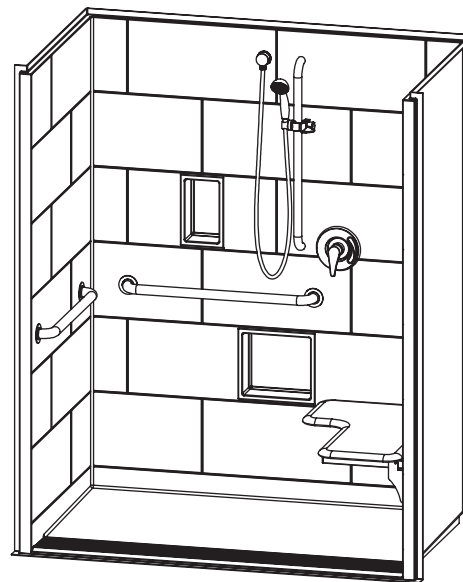
- Shell reinforced for future accessory installation
  - Seat Wall  LH  RH
  - Optional vertical bar reinforcement (entry wall)
    - LH  RH  Both
- Fully configured — ADA/ANSI
  - Seat Wall (must choose one)  LH  RH
  - Includes one stainless steel 28" x 1 1/2" grab bar located on the side wall, one stainless steel 30" x 1 1/2" grab bar located on the back wall, stainless steel grate and cushioned, white, L-shaped fold-up seat, per ADA/ANSI guidelines. (std config)
  - Factory-installed plumbing options per ADA requirements
    - Hand-held shower assembly, 30" slide bar and 60" hose
    - Pressure balancing mixing valve

**OPTIONAL ACCESSORIES (available for all models)**

- Stainless steel vertical bar 24" x 1 1/2" (entry wall)
  - LH  RH  Both
- Large soap dish (12 1/2 W x 3 1/2 D x 1 1/2 H), shipped loose
- Small soap dish (7 W x 3 1/2 D x 1 1/2 H), shipped loose
- Curtain rod, shipped loose
- Shower curtain, shipped loose
- Brass drain
- Colors:
  - Standard  White
  - Upgraded  Biscuit  Bone
  - Other (contact customer service for custom color options)
- Additional accessories:

**CUSTOM OPTIONS (not avail. if ADA/ANSI configuration is selected)**

- Handed by the seat  LH  RH
- Reinforced for future seat installation
- L-shaped fold-up seat
  - Cushioned white  Phenolic teak  Phenolic white
- Grab bars:
  - Horizontal L-shaped bars: 22" (side wall) and 30" (back wall)
    - LH  RH
  - Vertical bar 28" (entry wall)  LH  RH  Both
- Grab Bar finish:
  - Stainless steel (1 1/2" dia.)
  - Powder-coated white (1 1/4" dia.)
- Factory-installed plumbing options per ADA requirements
  - Hand-held shower assembly, 30" slide bar and 60" hose
  - Pressure balancing mixing valve
- Grate:
  - Stainless steel
  - White



Right hand configuration shown with optional soap dish

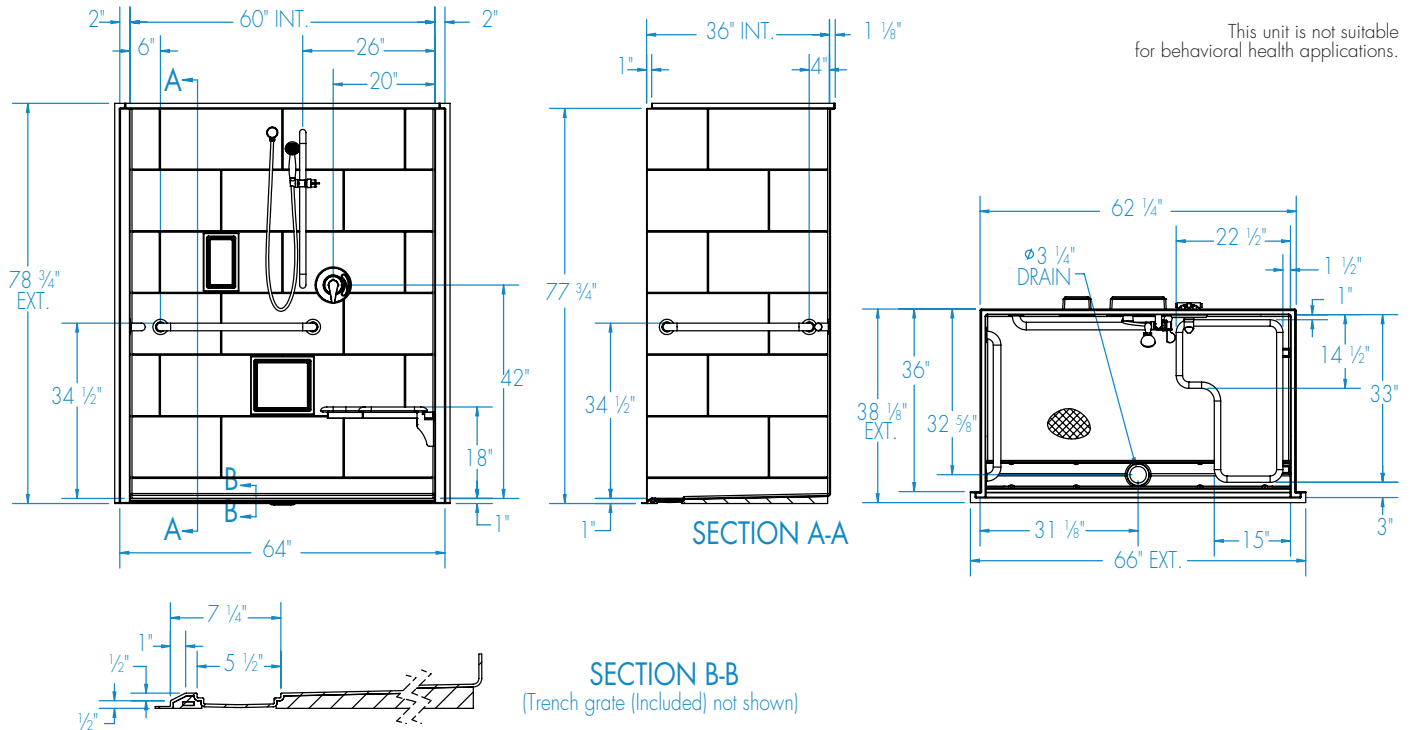
This unit is not suitable for behavioral health applications.



ADA/ANSI compliant when fully equipped and installed according to guidelines.



This unit is not suitable for behavioral health applications.



**FEATURES** lbs Dimensional Tolerance  $\pm \frac{3}{8}$ ". Dimensions needed for site preparation should be measured from the unit. Manufacturer assumes no responsibility for preparatory work.

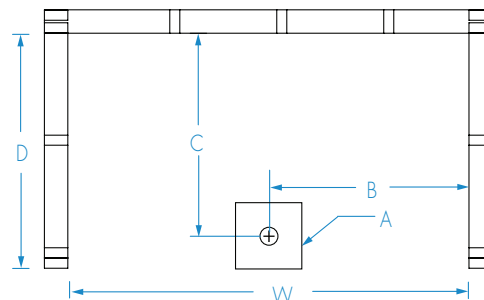
Type and Model #	Material	Wall Finish	Pieces	Drain	Dam/Skirt Height	Net Wt.	Pkg. Wt.
Shower XST6238TR COL	AcrylX™ applied acrylic	Smooth tile	1	Center Front	1/2" skirt 1/2" exterior COL threshold	200	210

**DIMENSIONS**

Specifications	inches
Width: Ext. / Int.	66 / 60
Depth: Ext. / Int.	38 1/8 / 36
Height: Ext. / Int.	78 3/4 / 76 3/4
Enclosure Opening:	60
Skirt Height:	1/2
Drain Rough-In (from Back Wall)	32 5/8
Drain Rough-In (from Side Wall)	31 1/8

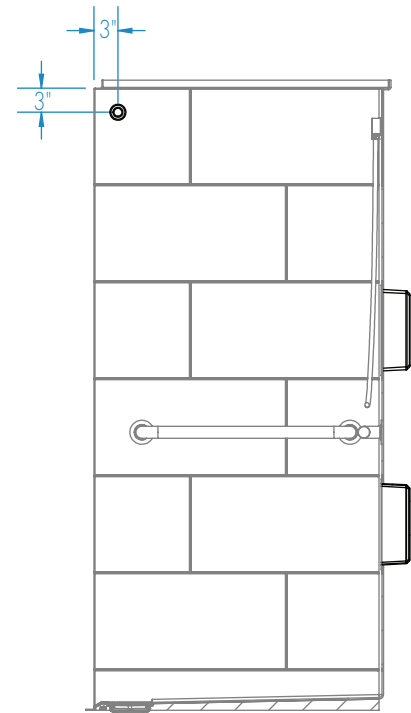
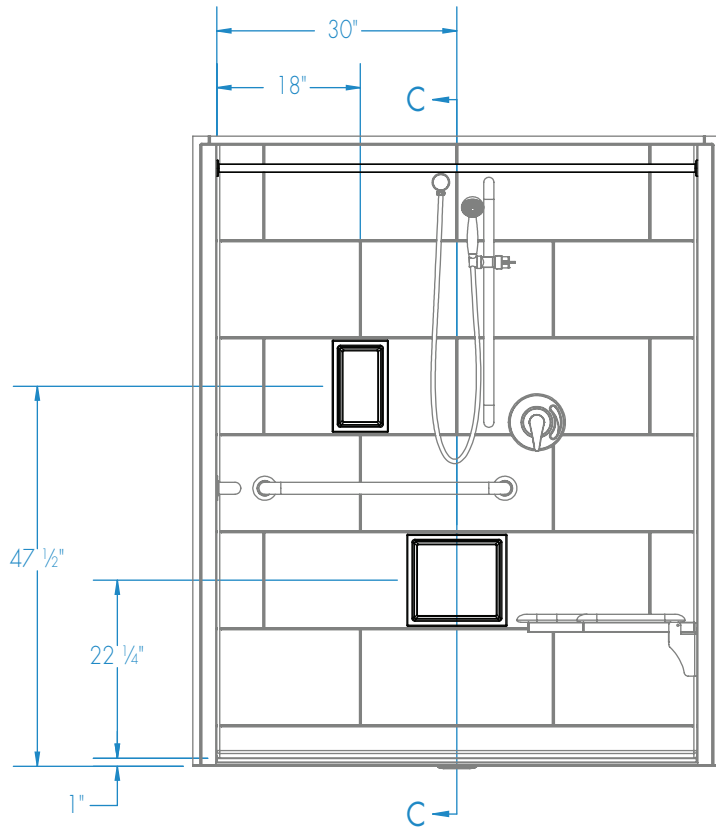
**FRAMING DIMENSIONS** inches (mm)

Type	D Depth	W Width	H Height	A	B	C
Alcove	36	62 1/4	-	Box Out	31 1/8	32 5/8



EMAIL TO THE CENTRALIZED CUSTOMER SERVICE CENTER: [quotes@americanbathgroup.com](mailto:quotes@americanbathgroup.com)

Curtain Rod and Soap Dish Locations (Standard Valve Configuration)



SECTION C-C