

XST3838TR 1.125

With Seat • ADA Compliant

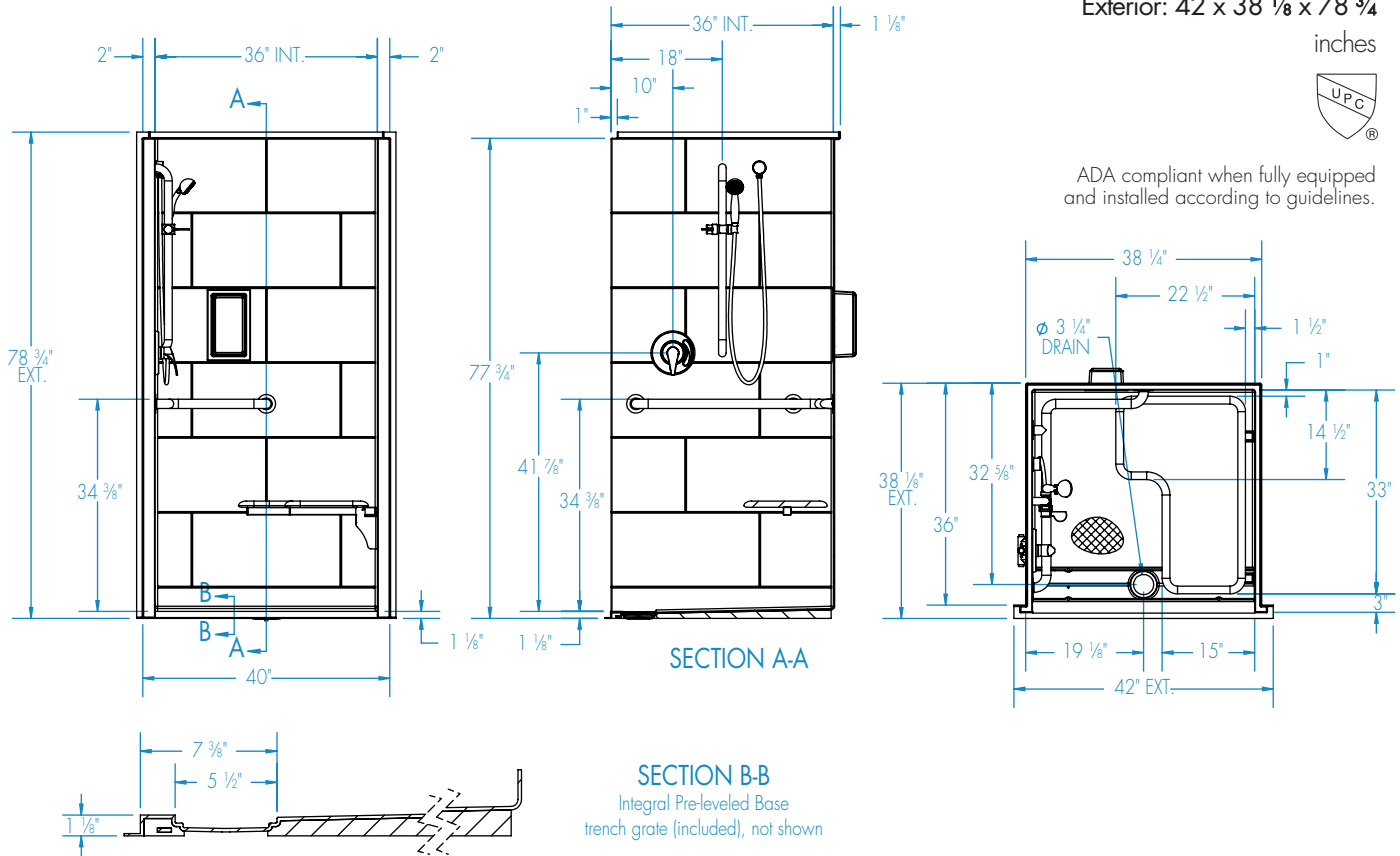
Interior: 36 x 36 x 76 ¾

Exterior: 42 x 38 ⅛ x 78 ¾

inches



ADA compliant when fully equipped and installed according to guidelines.



FEATURES lbs Dimensional Tolerance ± ⅜". Dimensions needed for site preparation should be measured from the unit. Manufacturer assumes no responsibility for preparatory work.

Type and Model #	Material	Wall Finish	Pieces	Drain	Dam/Skirt Height	Net Wt.	Pkg. Wt.
Shower XST3838TR 1.125	AcrylX™ applied acrylic	Smooth tile	1	Center Front	1 ⅛" skirt	140	150

DIMENSIONS

Specifications	inches (mm)
Width: Ext. / Int.	42 / 36
Depth: Ext. / Int.	38 ⅛ / 36
Height: Ext. / Int.	78 ¾ / 76 ¾
Enclosure Opening:	36
Skirt Height:	1 ⅛
Drain Rough-In (from Back Wall)	32 ⅝
Drain Rough-In (from Side Wall)	19 ⅛

FRAMING DIMENSIONS inches (mm)

Type	D Depth	W Width	H Height	A	B	C
Alcove	36	38 ¼	—	Box Out	19 ⅛	32 ⅝

